

DHW Solar kit (Drain back system)

Stainless steel tank
Selective solar collector

Complete equipment:
Expansion vessel and DHW relief valve included

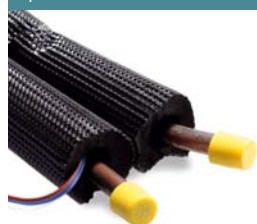


Model	Maximum height m	Vol. hot water tank L	N° solar collectors	Tank exchange surface m ²	Solar exchanger surface m ²
DS-matic 1.15 L	10	150	1	1.93	1.90
DS-matic 1.25 L	10	250	1	2.74	1.90
DS-matic 2.25 L	10	250	2	2.74	3.80
DS-matic Plus 1.15 L	15	150	1	1.93	1.90
DS-matic Plus 1.25 L	15	250	1	2.74	1.90
DS-matic Plus 2.25 L	15	250	2	2.74	3.80
DS-matic 1.15 XL	10	150	1	1.93	2.23
DS-matic 1.25 XL	10	250	1	2.74	2.23
DS-matic 2.25 XL	10	250	2	2.74	4.46
DS-matic Plus 1.15 XL	15	150	1	1.93	2.23
DS-matic Plus 1.25 XL	15	250	1	2.74	2.23
DS-matic Plus 2.25 XL	15	250	2	2.74	4.46

Brackets

See page 85

Options



Cathodic protection DX DS-matic 1.15

Cathodic protection V DS-matic 1.25/2.25

Mixing valve

Electric heating element 1.5 kW

Electric heating element 2.5 kW

Electric heating element 3.5 kW

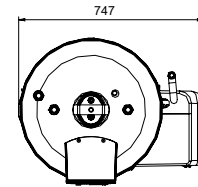
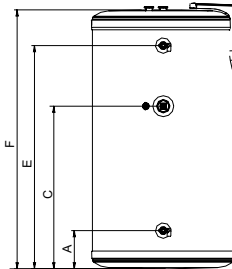
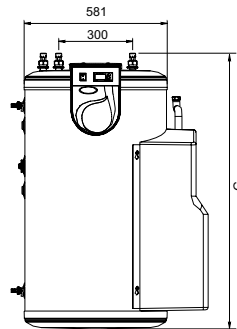
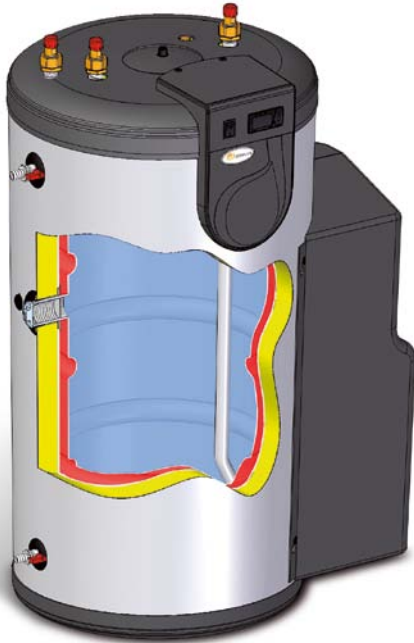
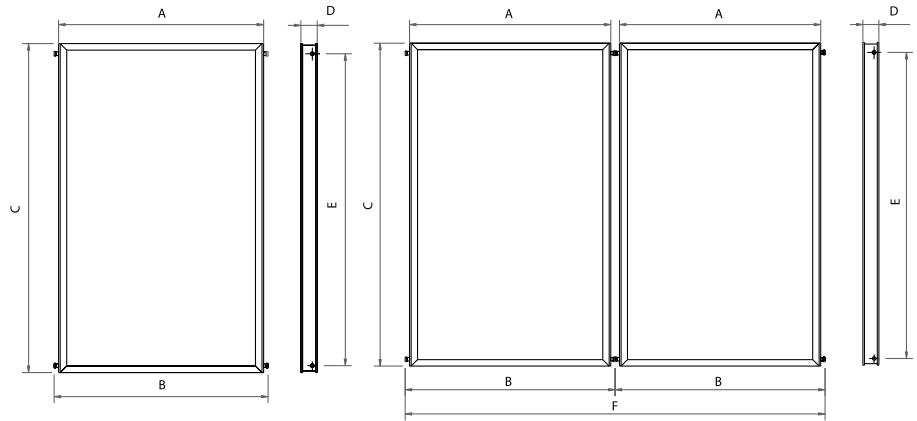
Sloping roof pipe collar

Hydraulic connection kit 15 m Ø 12/10

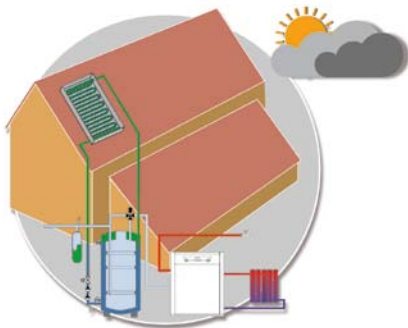
Double connector for Ø12 pipe connection

Box with 4 supports for Ø12 tube

	L Model	XL Model
A	1,041	1,218
B	1,095	1,272
C	1,988	1,988
D	90	90
E	1,912	1,912
F	2,190	2,544

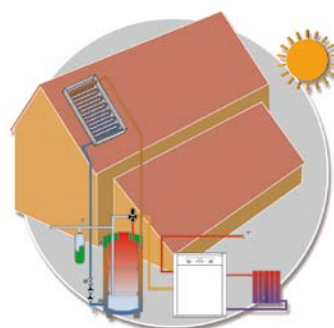


	DS-matic 1.15 NL / NXL	DS-matic 1.25 NL/NXL DS-matic 2.25 NL/NXL
A	140	140
C	645	1,134
E	891	1,491
F	1,028	1,628
G	1,115	1,715



Circulation unit off (no solar radiation)

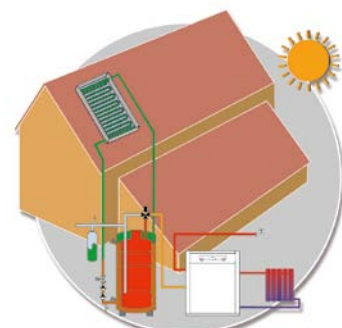
The solar collectors remain full of air, preventing risk of the pipes freezing if frost occurs.



Circulation unit running

If you wish to heat up the hot water tank and the collectors are hotter than the tank itself, the circulation unit consisting of two pumps will start up.

When a certain time has elapsed, one of the pumps will stop, reducing electrical consumption.



Circulation unit off (excess solar radiation)

When the hot water tank has reached the desired temperature, the air inside the solar surge tank is moved out to the solar collectors, thus preventing any overheating which could damage the collectors.

DS-matic		
2 Circulation pumps	Switch	Options
3 bar safety valve	Flow meter	Mixing valve
Balancing valve	DHW expansion vessel	Electric heating element
Solar regulation	DHW safety valve	Cathodic protection
2 sensors	DHW dielectric pipe unions	Sloping roof pipe collar
Filling/drain cock	Primary dielectric pipe unions	Brackets
Level cock	Inhibitor liquid	
Thermometer		



DS-MATIC DUO

DHW Solar kit (Drain back system)

Stainless steel tank
Selective solar collector
Double exchange tank

Complete equipment:
Expansion vessel and DHW relief valve included

solar 

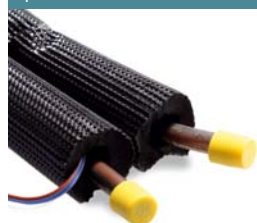


Model	Maximum height m	Vol. hot water tank L	N° collectors	Support exchanger surface m ²	Tank exchange surface m ²	Solar exchanger surface m ²
DS-matic 1.15 Duo L	10	150	1	0.50	1.93	1.90
DS-matic 1.25 Duo L	10	250	1	0.85	2.74	1.90
DS-matic 2.25 Duo L	10	250	2	0.85	2.74	3.80
DS-matic Plus 1.15 Duo L	15	150	1	0.50	1.93	1.90
DS-matic Plus 1.25 Duo L	15	250	1	0.85	2.74	1.90
DS-matic Plus 2.25 Duo L	15	250	2	0.85	2.74	3.80
DS-matic 1.15 Duo XL	10	150	1	0.50	1.93	2.23
DS-matic 1.25 Duo XL	10	250	1	0.85	2.74	2.23
DS-matic 2.25 Duo XL	10	250	2	0.85	2.74	4.46
DS-matic Plus 1.15 Duo XL	15	150	1	0.50	1.93	2.23
DS-matic Plus 1.25 Duo XL	15	250	1	0.85	2.74	2.23
DS-matic Plus 2.25 Duo XL	15	250	2	0.85	2.74	4.46

Brackets

See page 85

Options



Cathodic protection DX DS-matic DUO 1.15

Cathodic protection V DS-matic DUO 1.25/2.25

Mixing valve

Electric heating element 1.5 kW

Electric heating element 2.5 kW

Electric heating element 3.5 kW

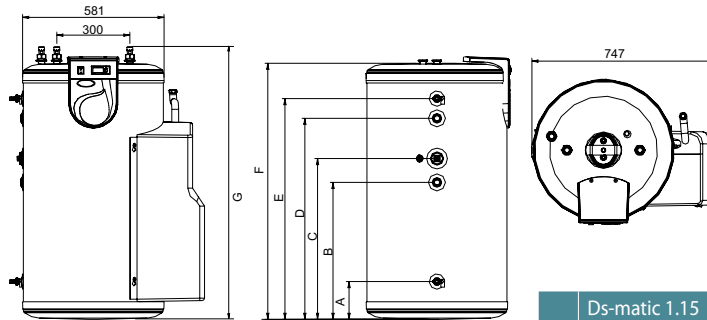
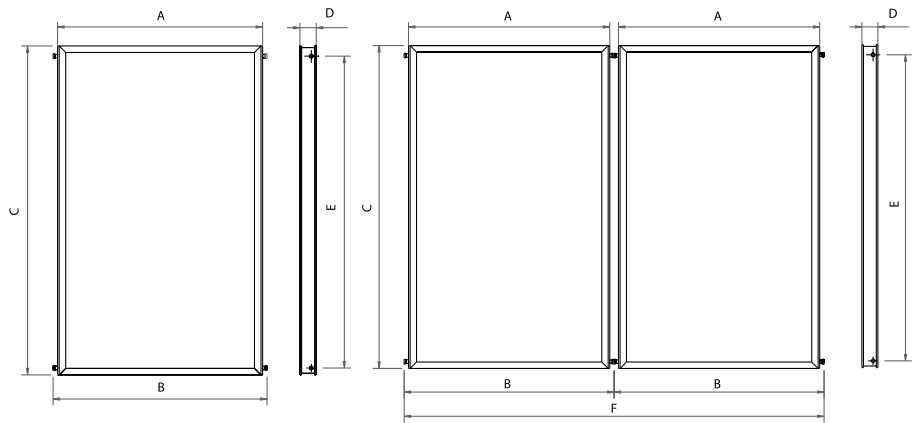
Sloping roof pipe collar

Hydraulic connection kit 15m Ø12/10

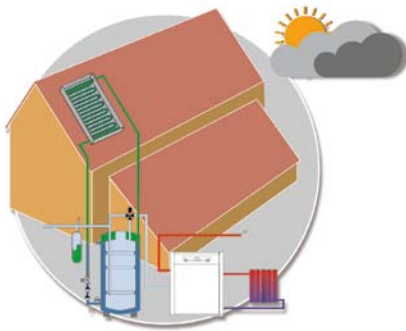
Double connector for Ø12 pipe connection

Box with 4 supports for Ø12 tube

	L Model	XL Model
A	1,041	1,218
B	1,095	1,272
C	1,988	1,988
D	90	90
E	1,912	1,912
F	2,190	2,544

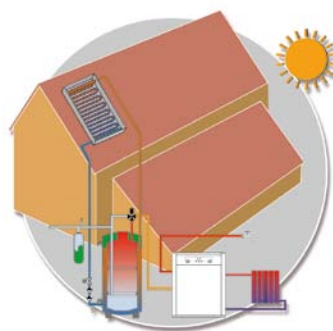


	DS-matic 1.15 DUO L / XL	DS-matic 1.25 DUO L/XL DS-matic 2.25 DUO L/XL
A	140	140
B	548	944
C	615	1,129
D	810	1,405
E	891	1,327
F	1,028	1,628
G	1,115	1,715



Circulation unit off (no solar radiation)

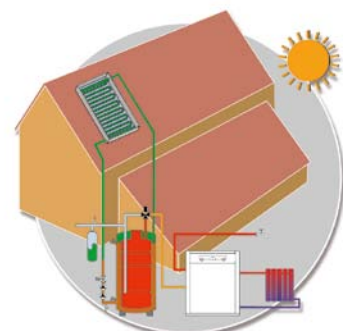
The solar collectors remain full of air, preventing risk of the pipes freezing if frost occurs.



Circulation unit running

If you wish to heat up the hot water tank and the collectors are hotter than the tank itself, the circulation unit consisting of two pumps will start up. sto por dos bombas se pone en marcha.

When a certain time has elapsed, one of the pumps will stop, reducing electrical consumption.



Circulation unit off (excess solar radiation)

When the hot water tank has reached the desired temperature, the air inside the solar surge tank is moved out to the solar collectors, thus preventing any overheating which could damage the collectors.

DS-matic DUO		
2 Circulation pumps	Switch	Options
3 bar safety valve	Flow meter	Mixing valve
Balancing valve	DHW expansion vessel	Electric heating element
Solar regulation	DHW safety valve	Cathodic protection
3 sensors	DHW dielectric pipe unions	Sloping roof pipe collar
Filling/drain cock	Primary dielectric pipe unions	Brackets
Level cock	Inhibitor liquid	
Thermometer		

